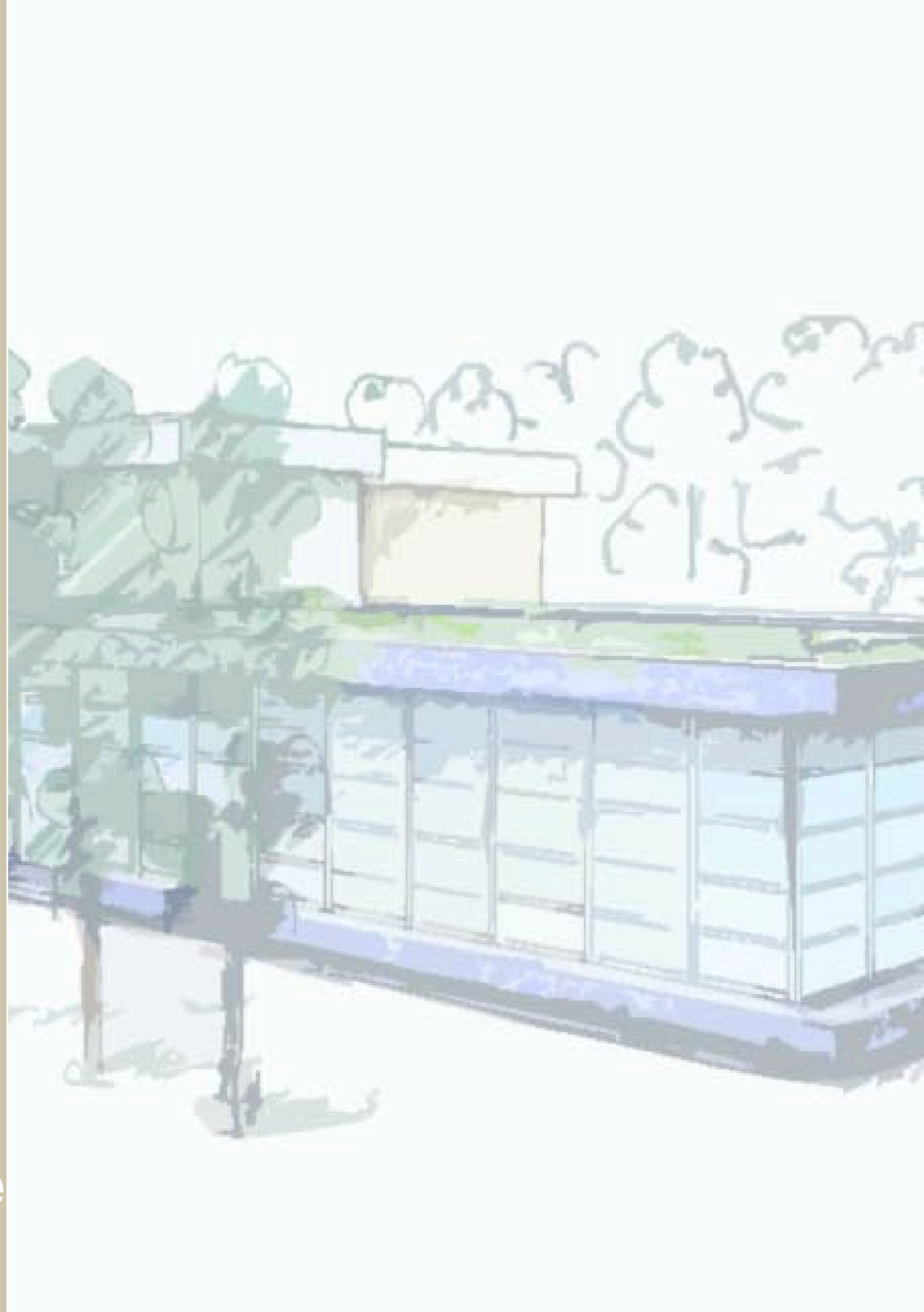
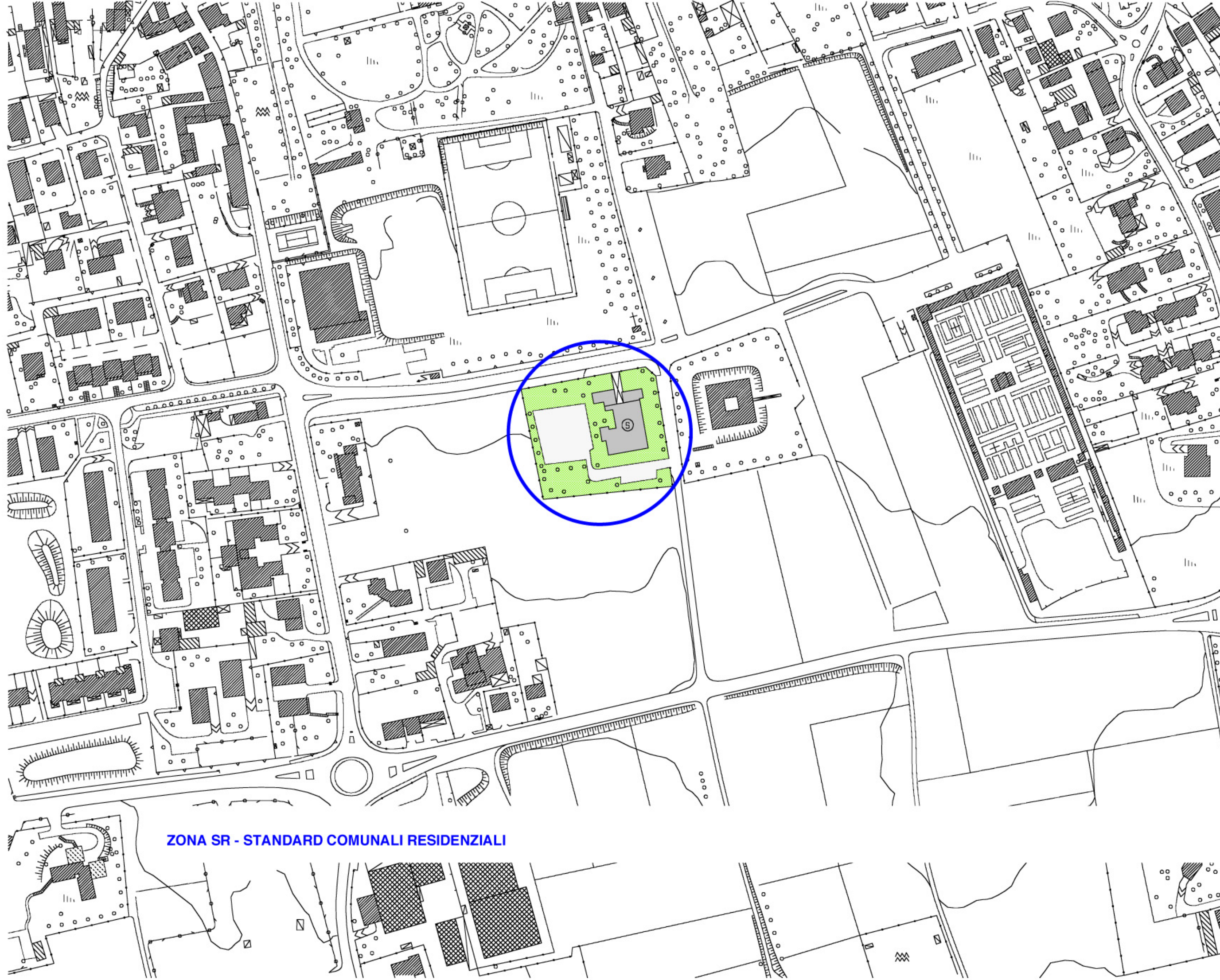


**School refectory  
project financing cermenate**

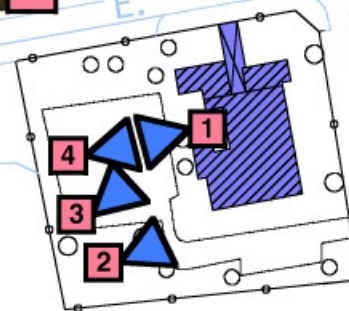






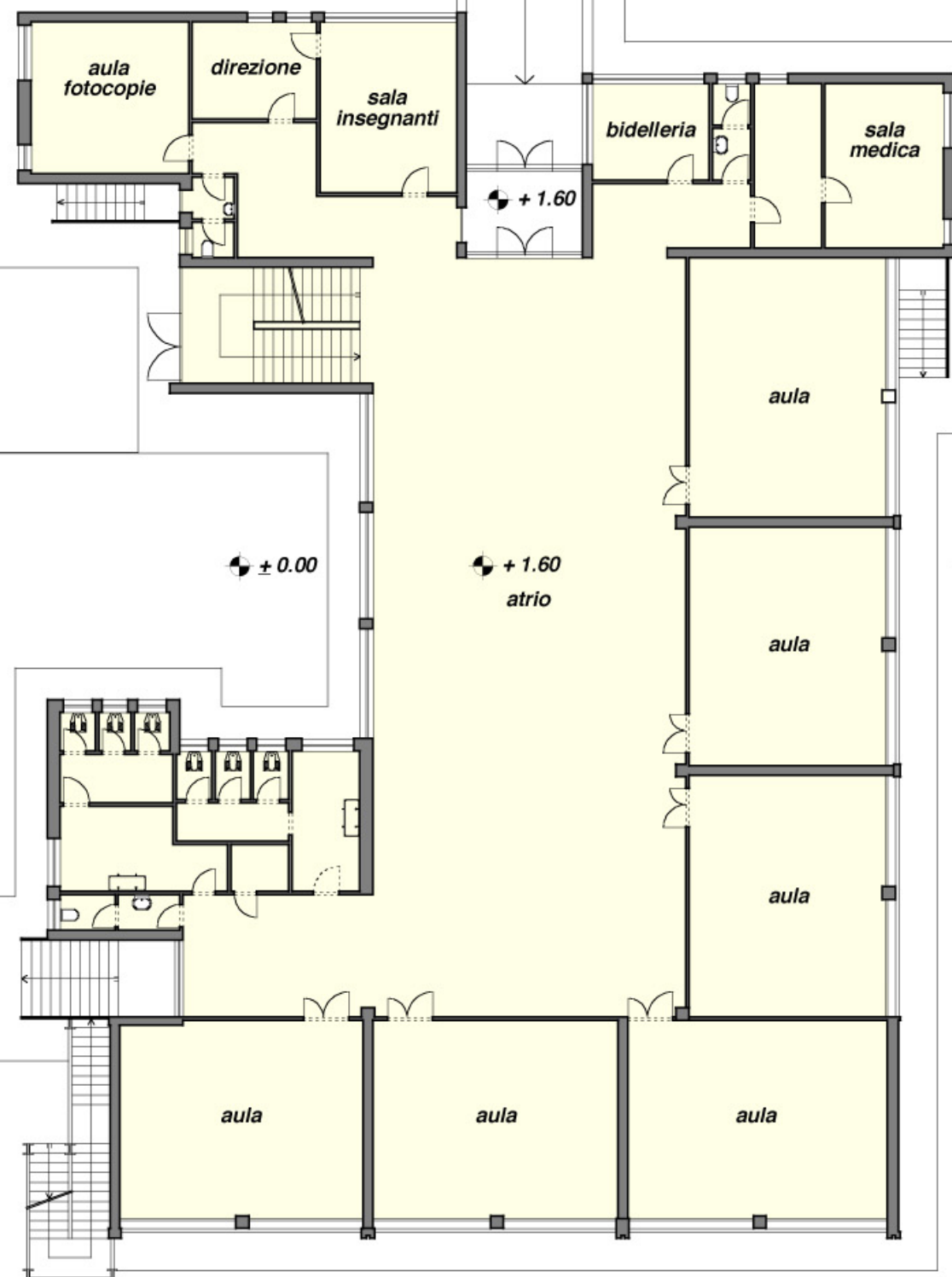
**ZONA SR - STANDARD COMUNALI RESIDENZIALI**



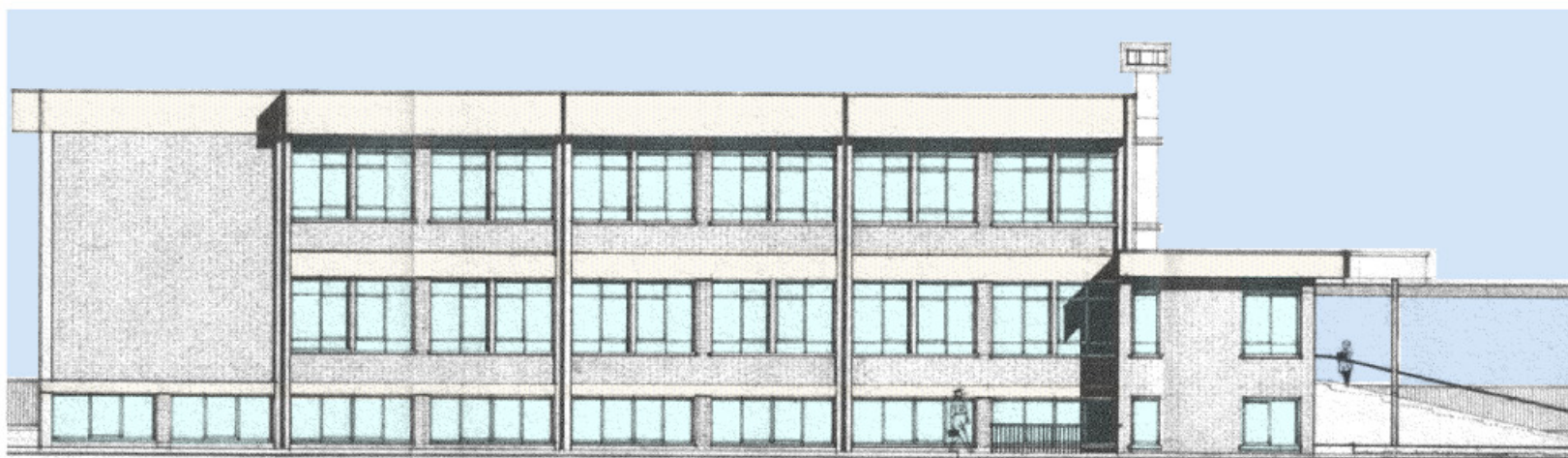




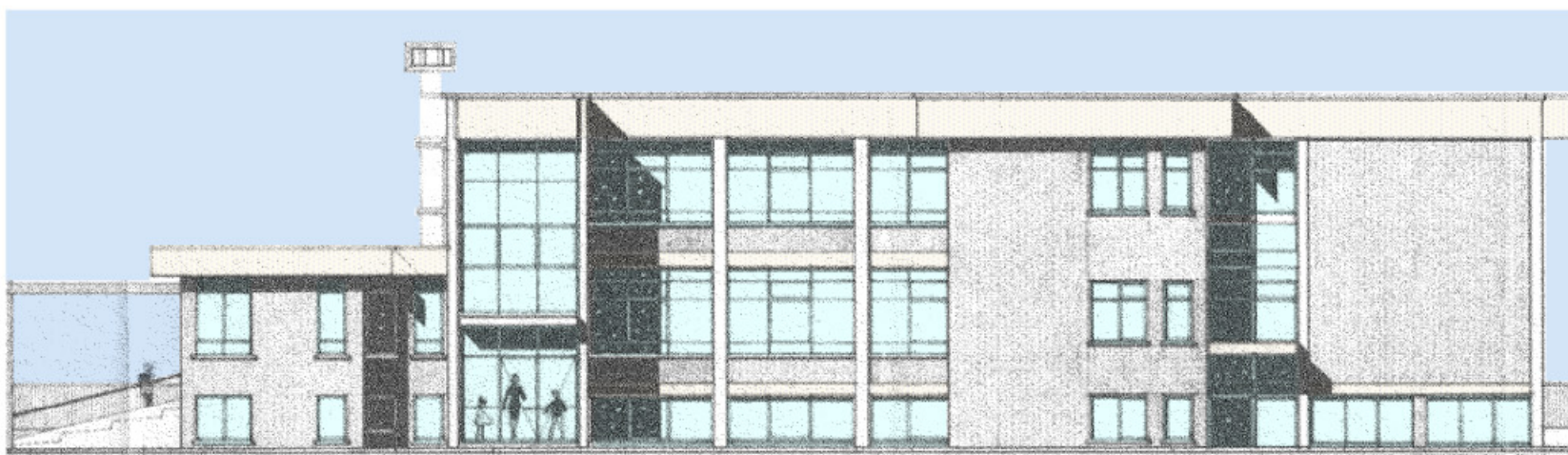
± 0.00







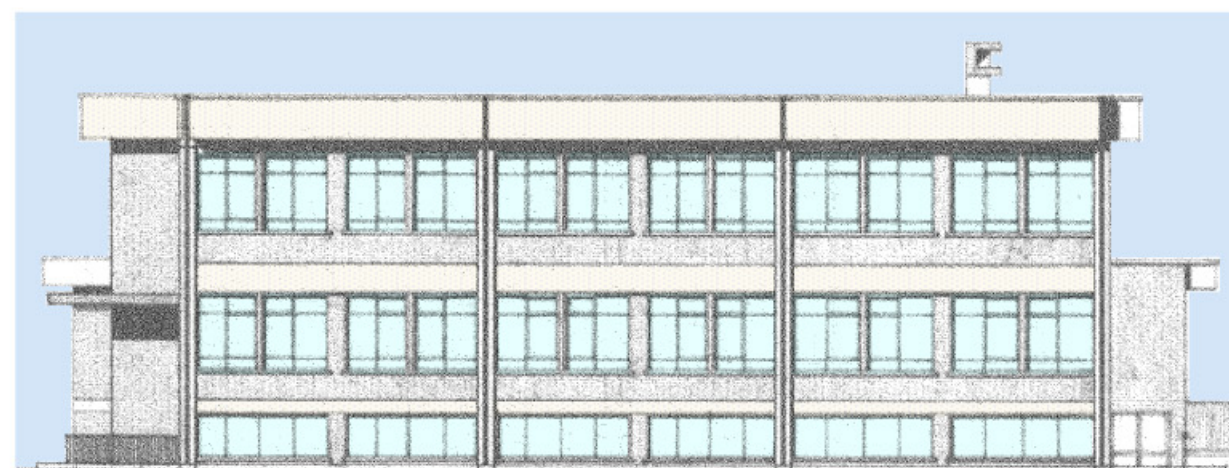
*prospetto est*



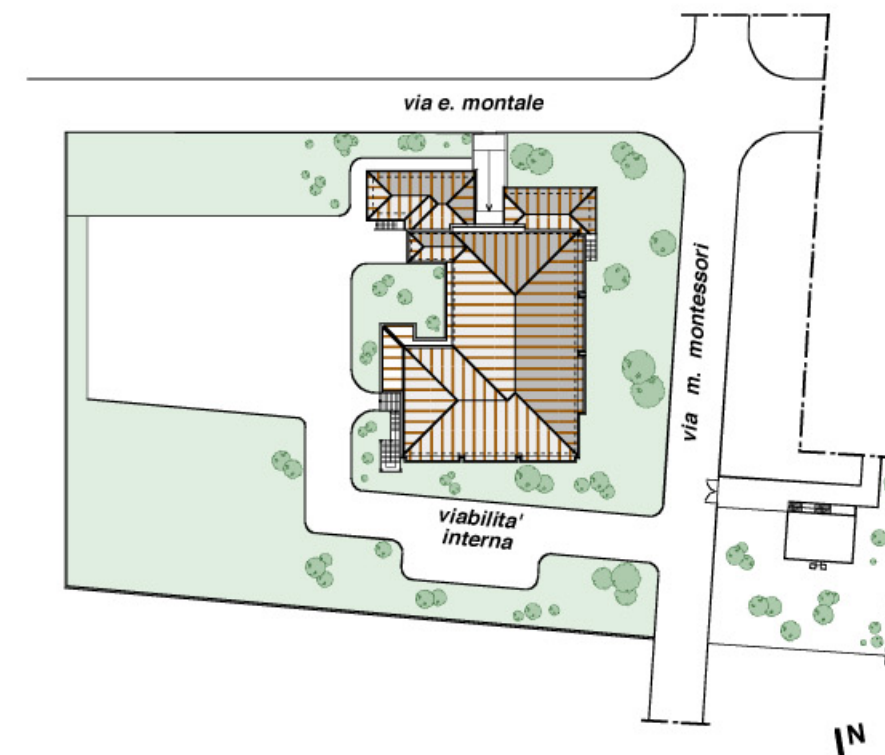
*prospetto ovest*



*prospetto nord*

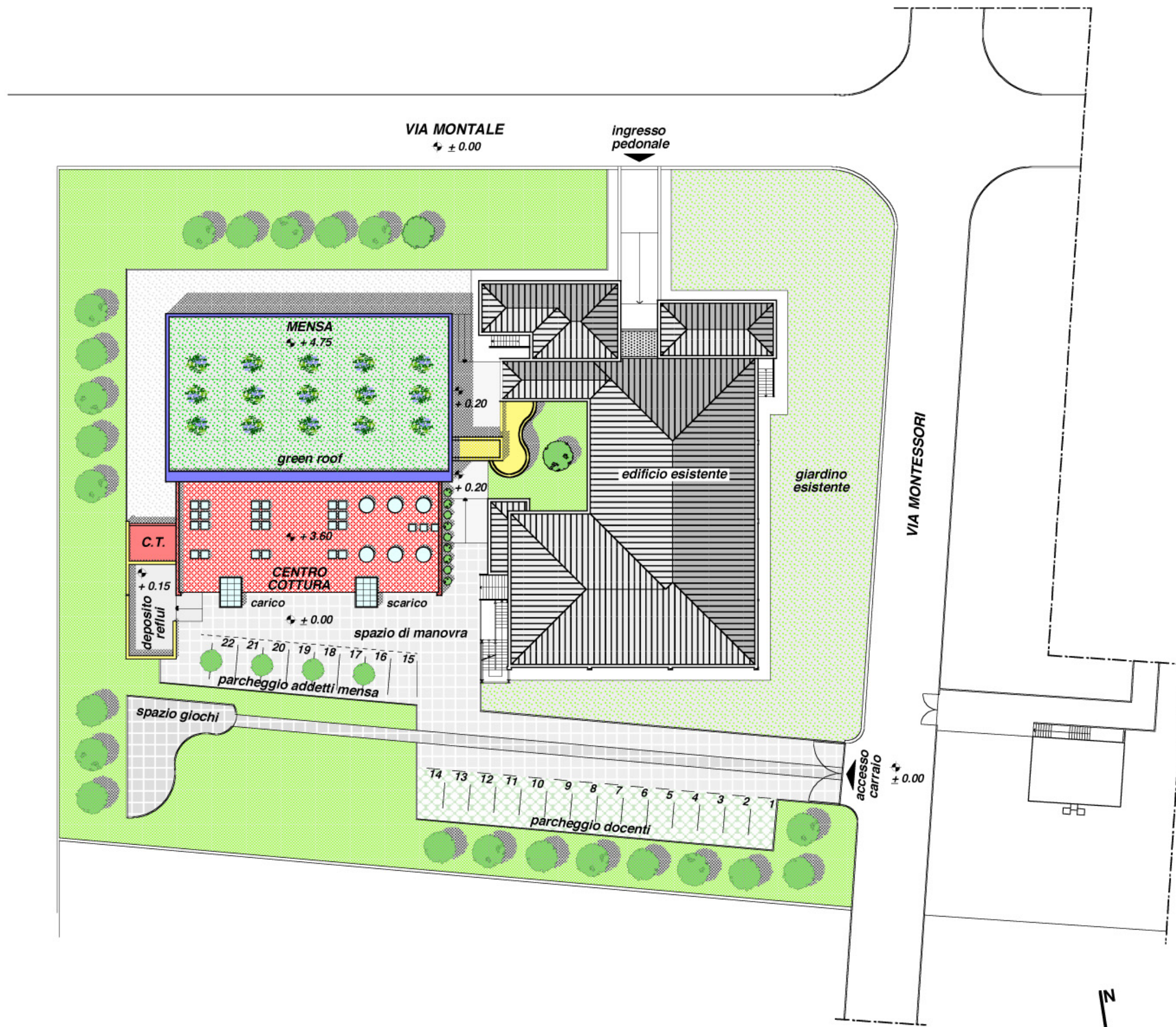


*prospetto sud*



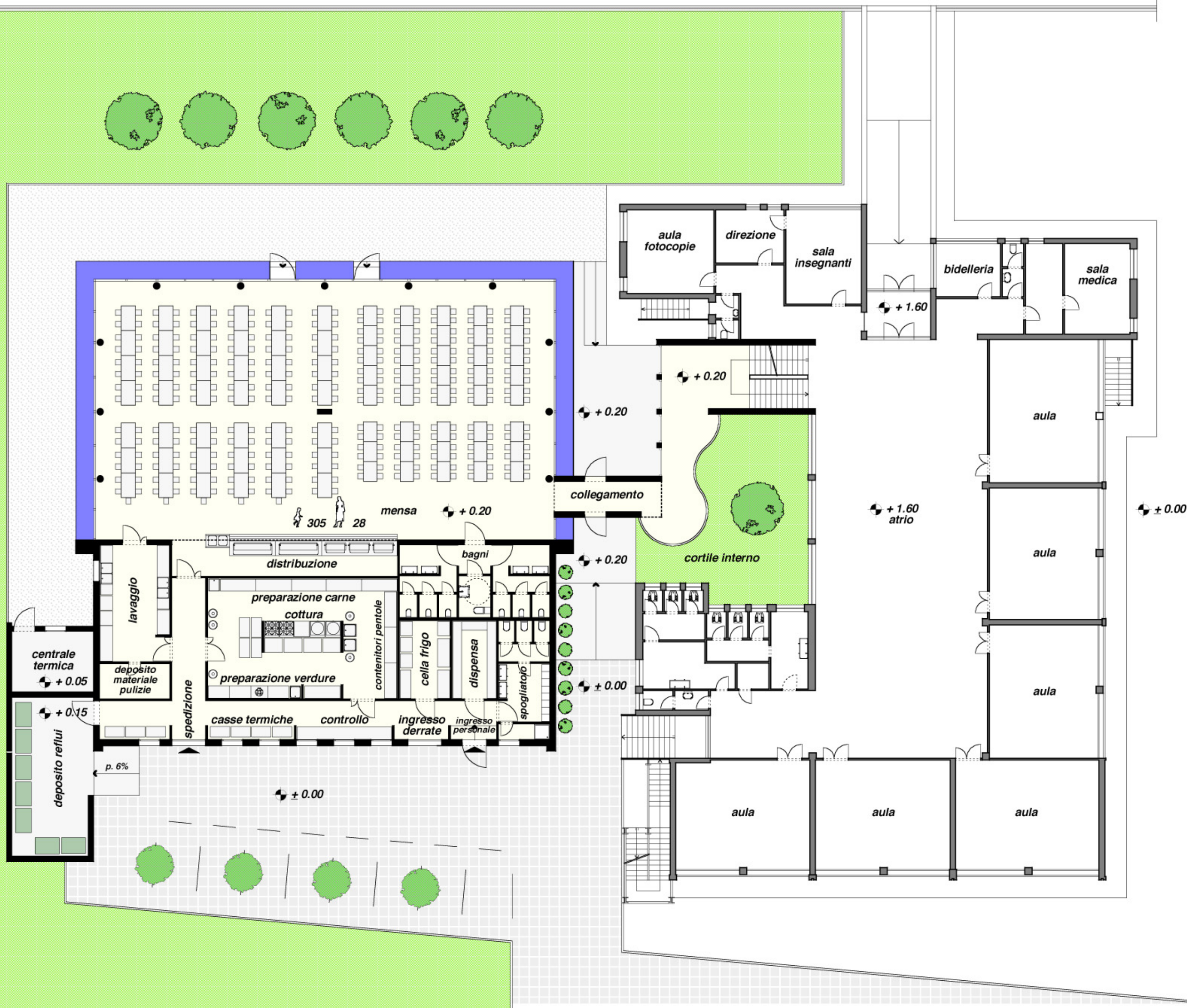
*planimetria r 1:1000*



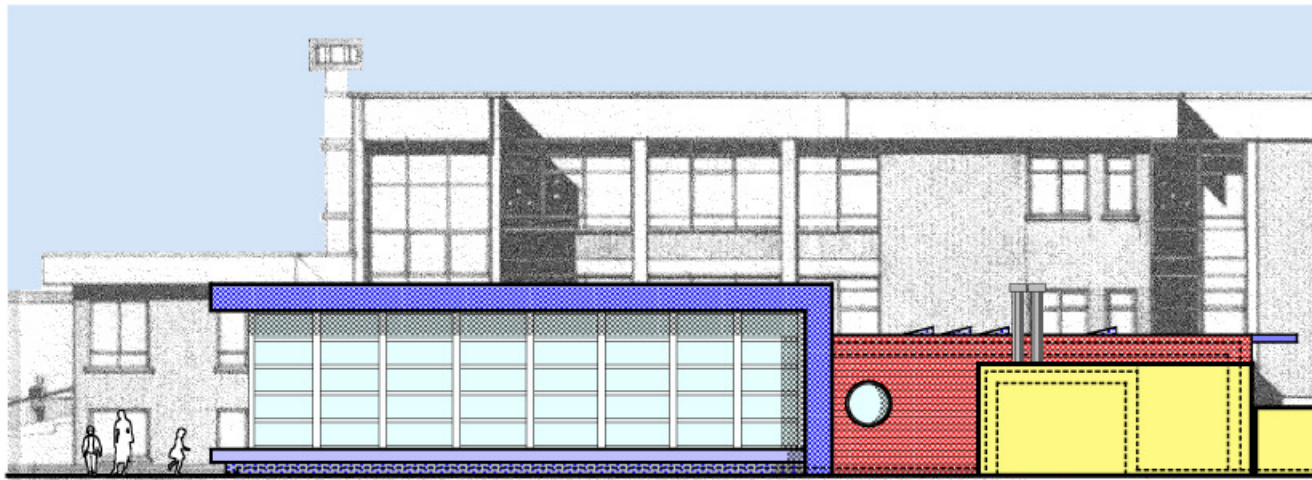




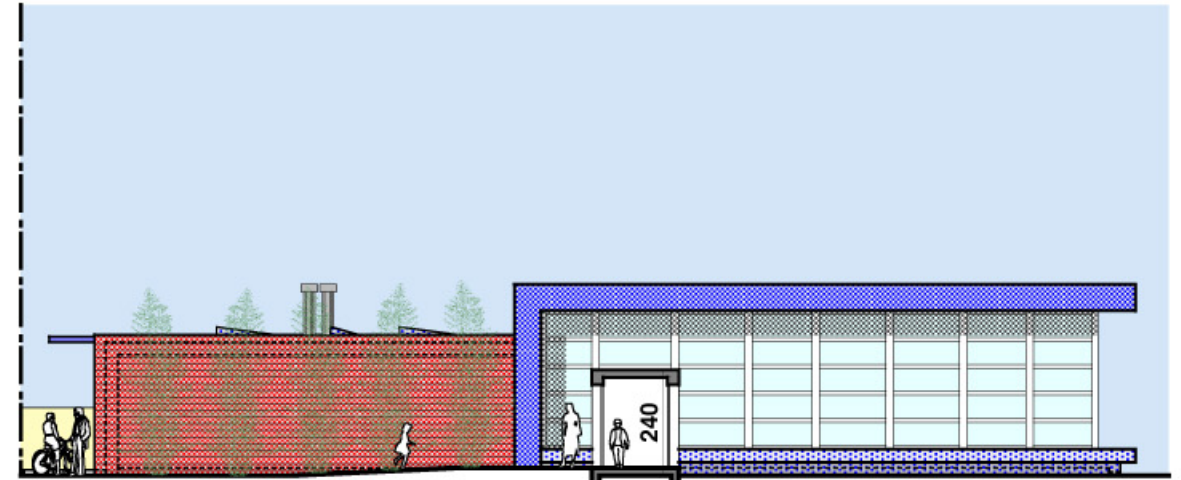
± 0.00



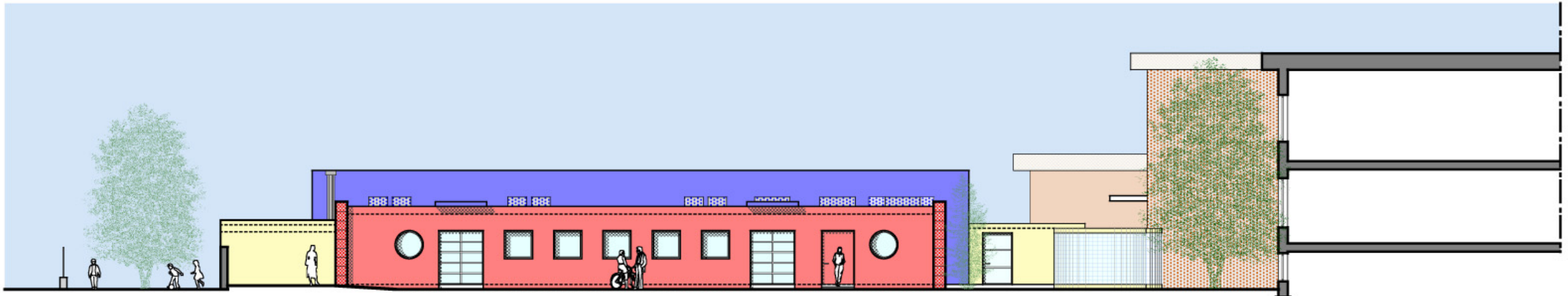




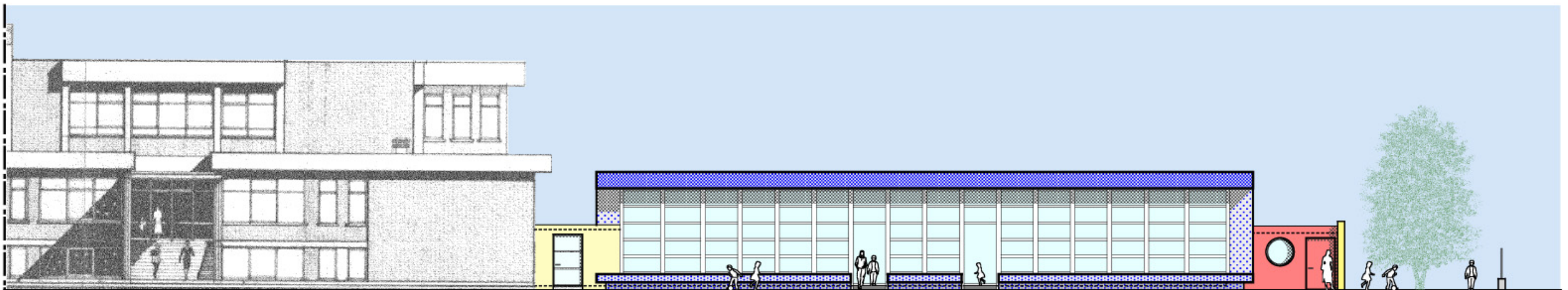
*prospetto ovest*



*prospetto est*

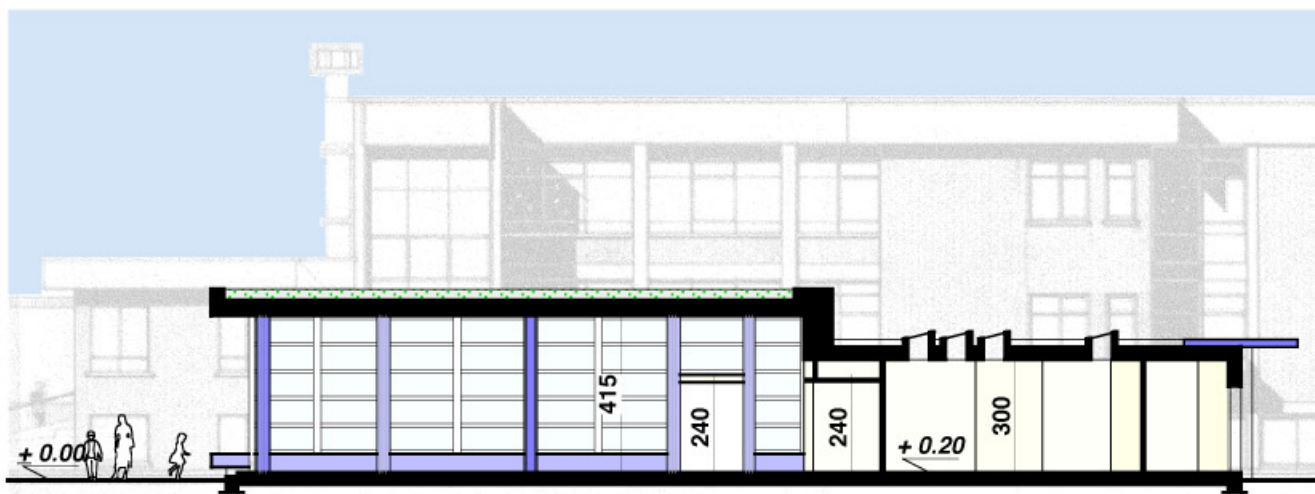


*prospetto sud*

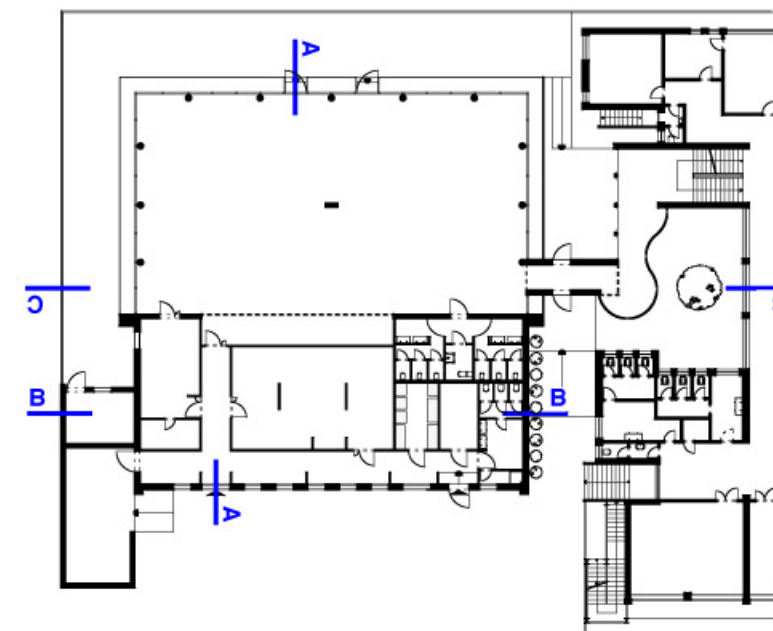


*prospetto nord*

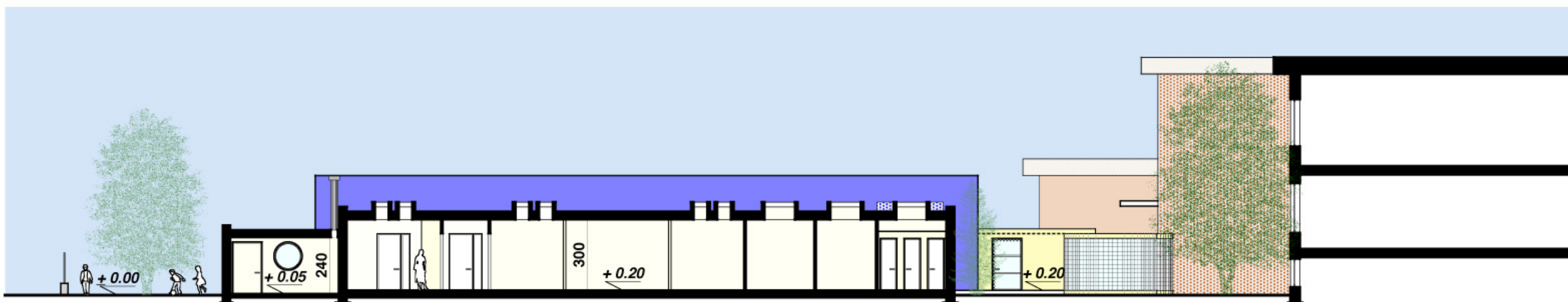




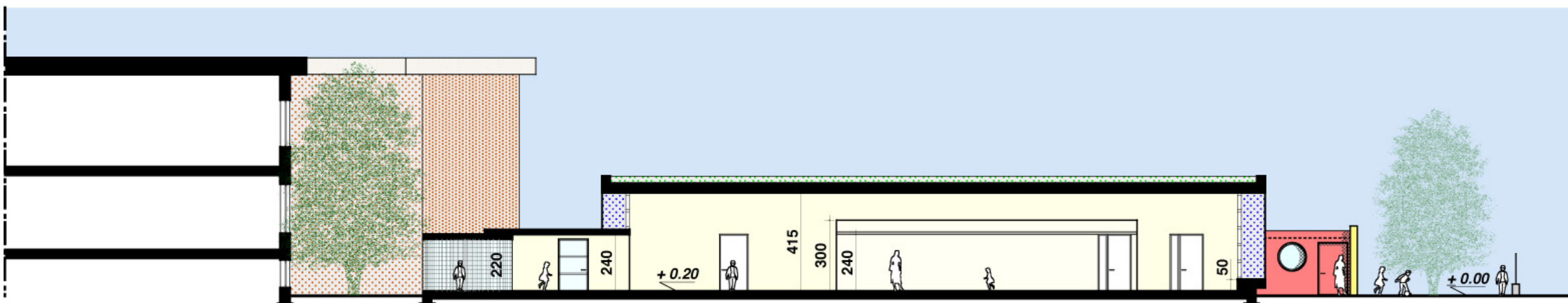
sezione A-A



estratto pianta piano rialzato

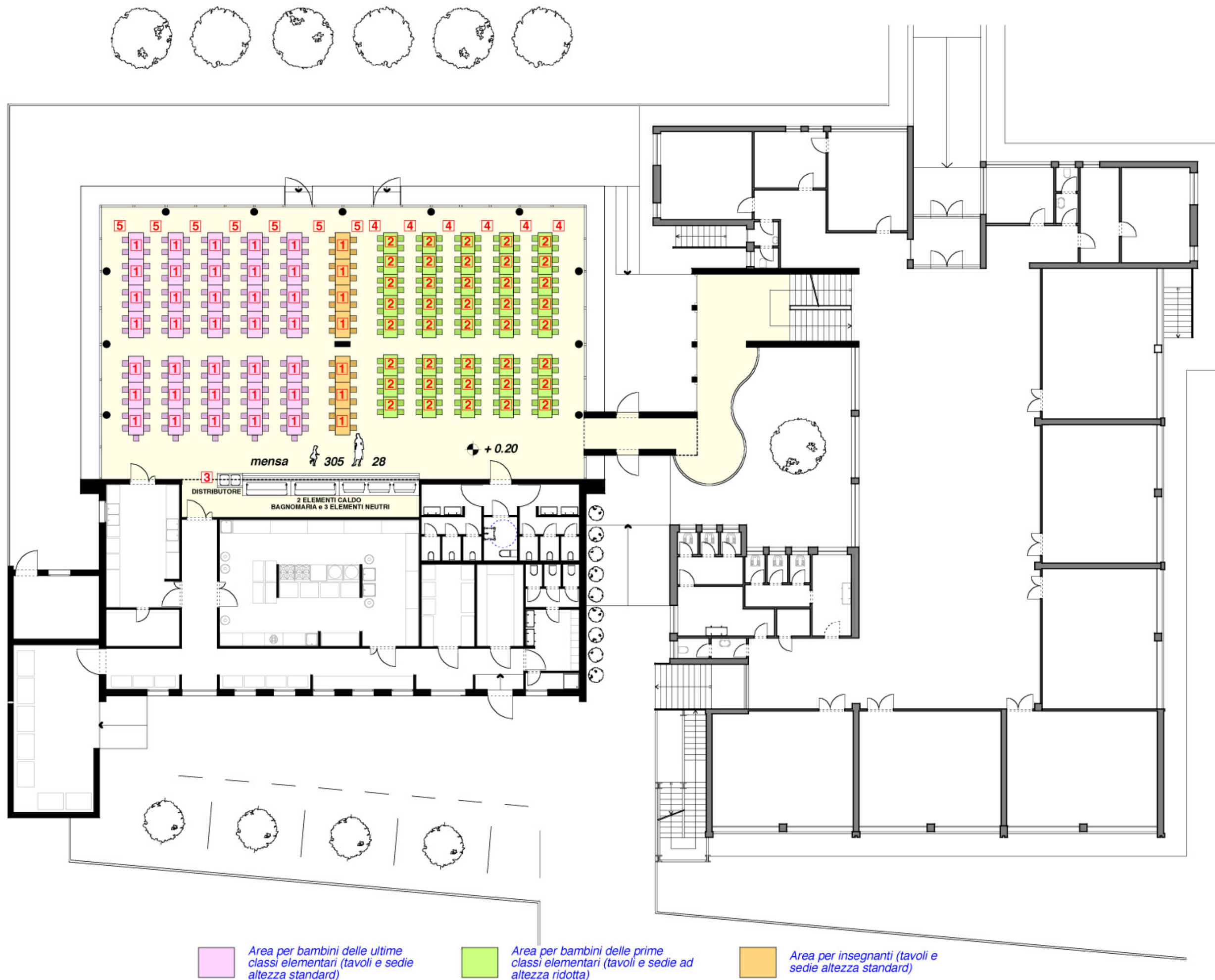


sezione B-B



sezione C-C









**1** Tavolo Magis con piano 140 x 80 cm in laminato bianco mod. Birillo e 4 gambe mod. Flare in ABS trasparente con pellicola interna a decoro h 73 cm

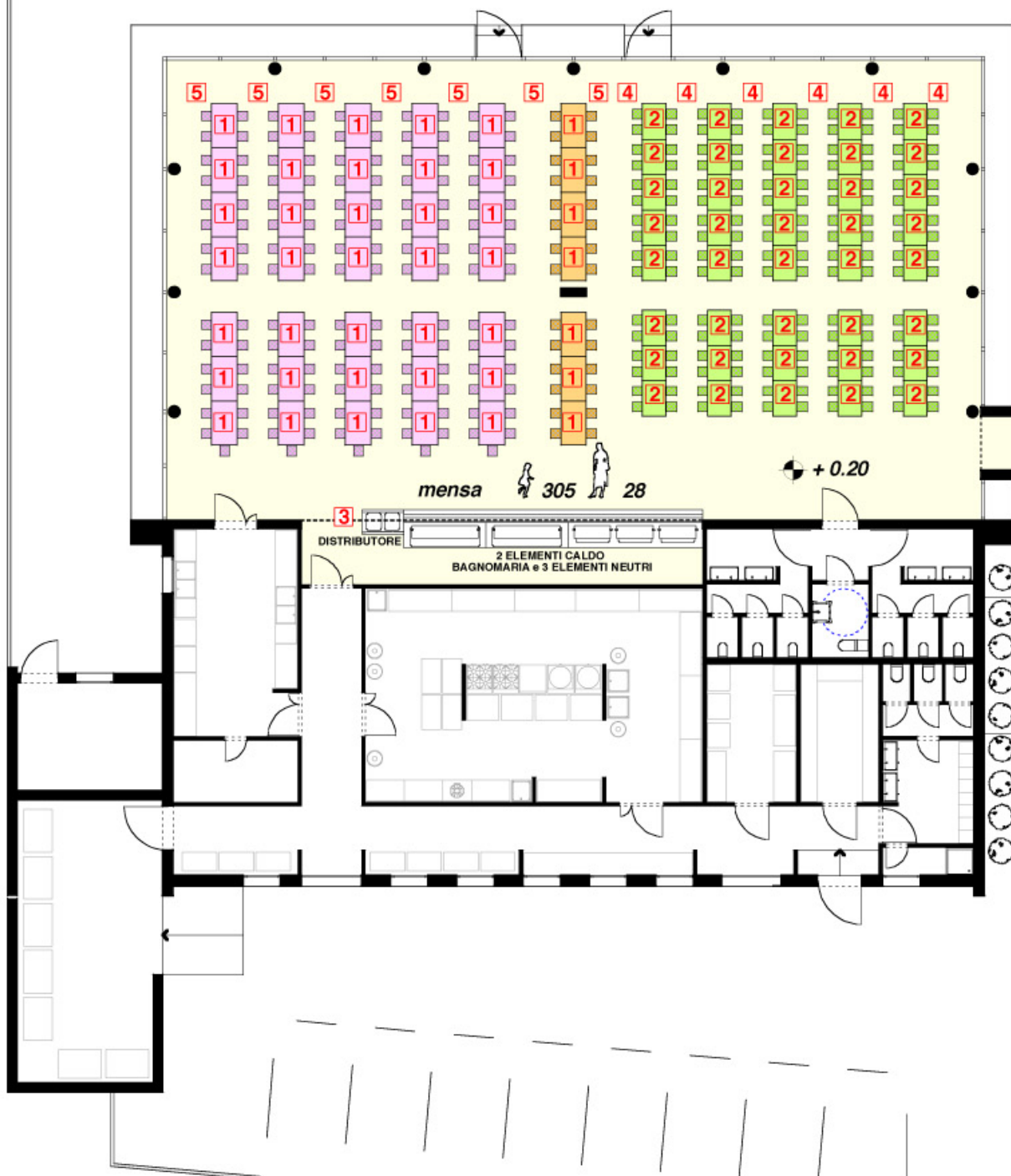


**AIR CHAIR**

**5** Sedia impilabile Magis in polipropilene caricato di fibra di vetro mod. Air chair 49 x 51 x 77,5 h (seduta h 47cm)



**2** Tavolo Magis con piano 100 x 75 cm in laminato bianco mod. Little Flare e 4 gambe mod. Little Flare in ABS trasparente con pellicola interna a decoro h 56 cm



**4** Sedia Magis in polipropilene espanso sinterizzato mod. Pop 30 x 33 x 58h (h seduta 30 cm)



Esempio di elemento bagnomaria caldo



**3** Banco in acciaio per la conservazione e la distribuzione del cibo: n° 3 elementi neutri, n° 2 elemento a bagnomaria caldo e n° 1 elemento di distribuzione



Esempio di elemento per la distribuzione



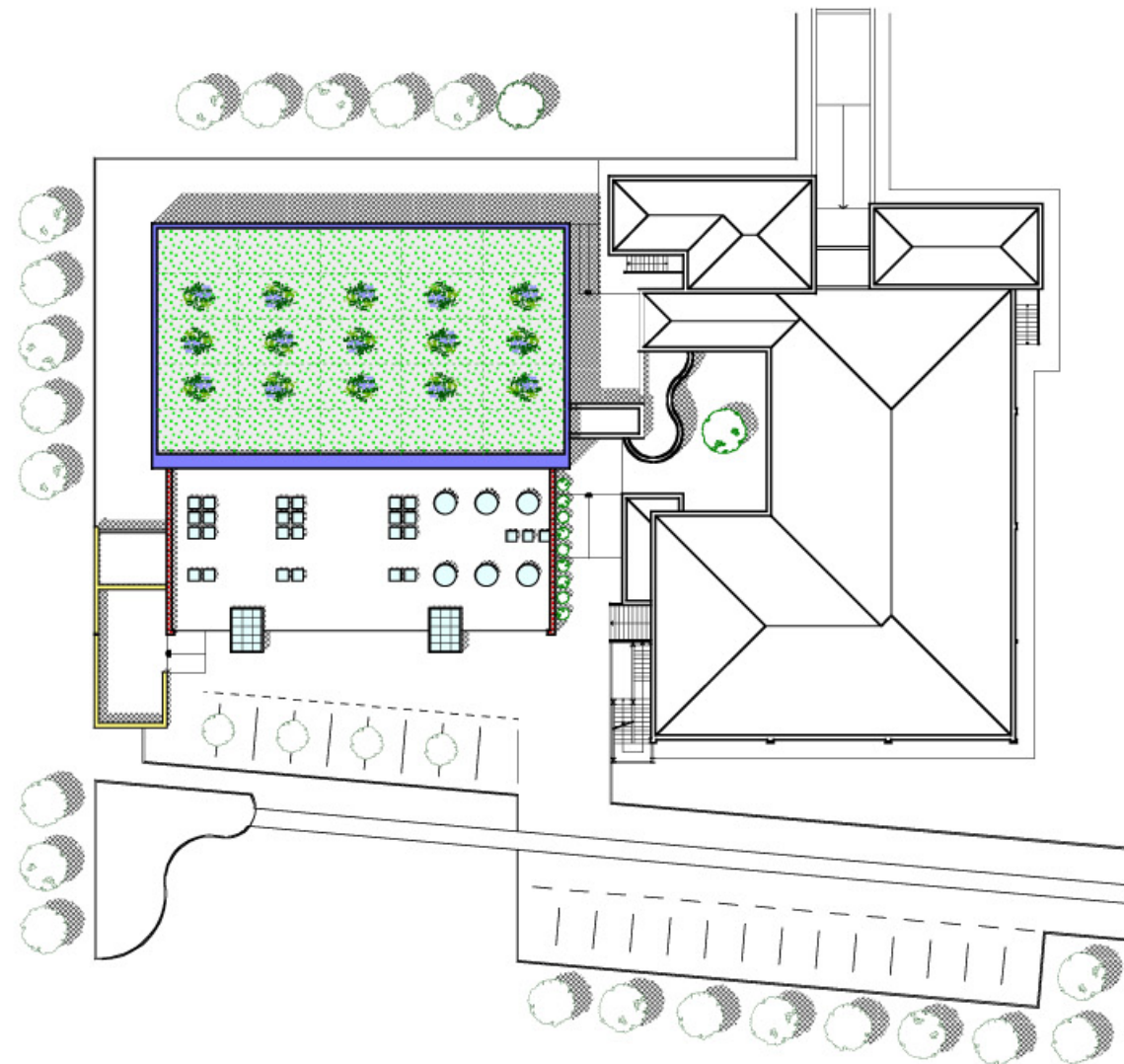
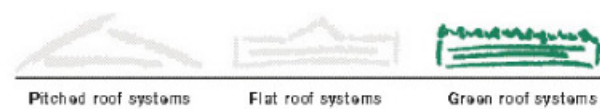
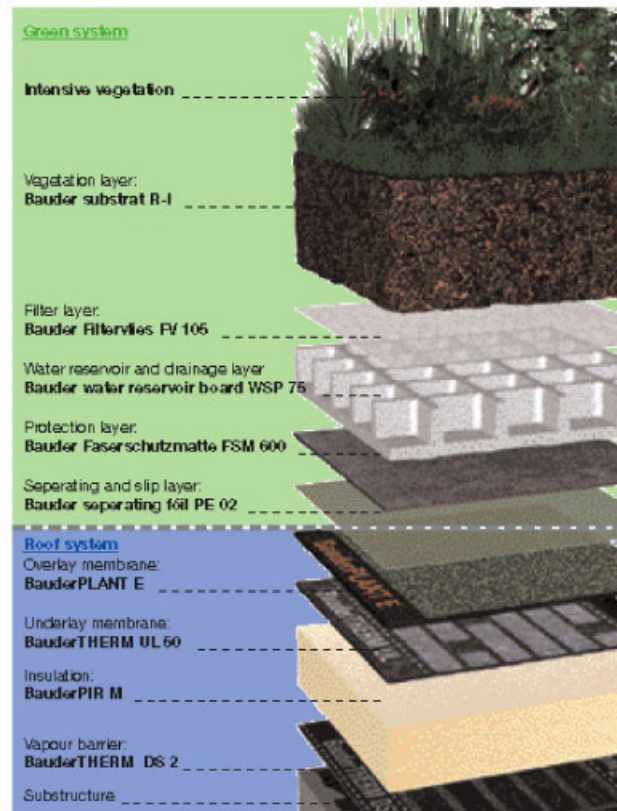
Esempio di elemento neutro



# BAUDER

## Green roof systems - intensive

Bauder water reservoir board WSP 75 -  
The storage miracle  
Storage capacity > 21,5 l/m²



planimetria r 1.200

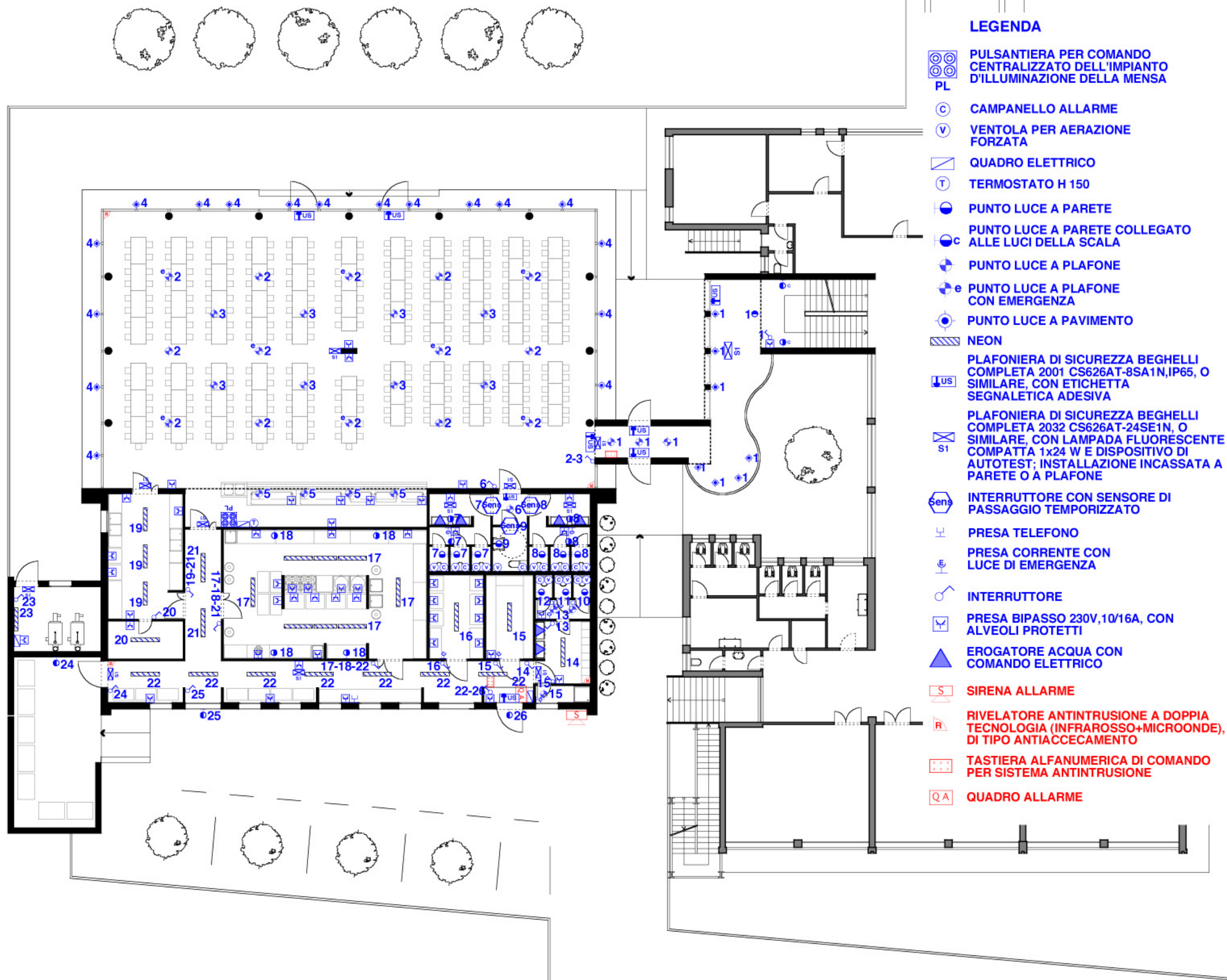


Esempi di applicazione di green roof intensivo.  
Pacchetto massimo di costruzione di 28cm

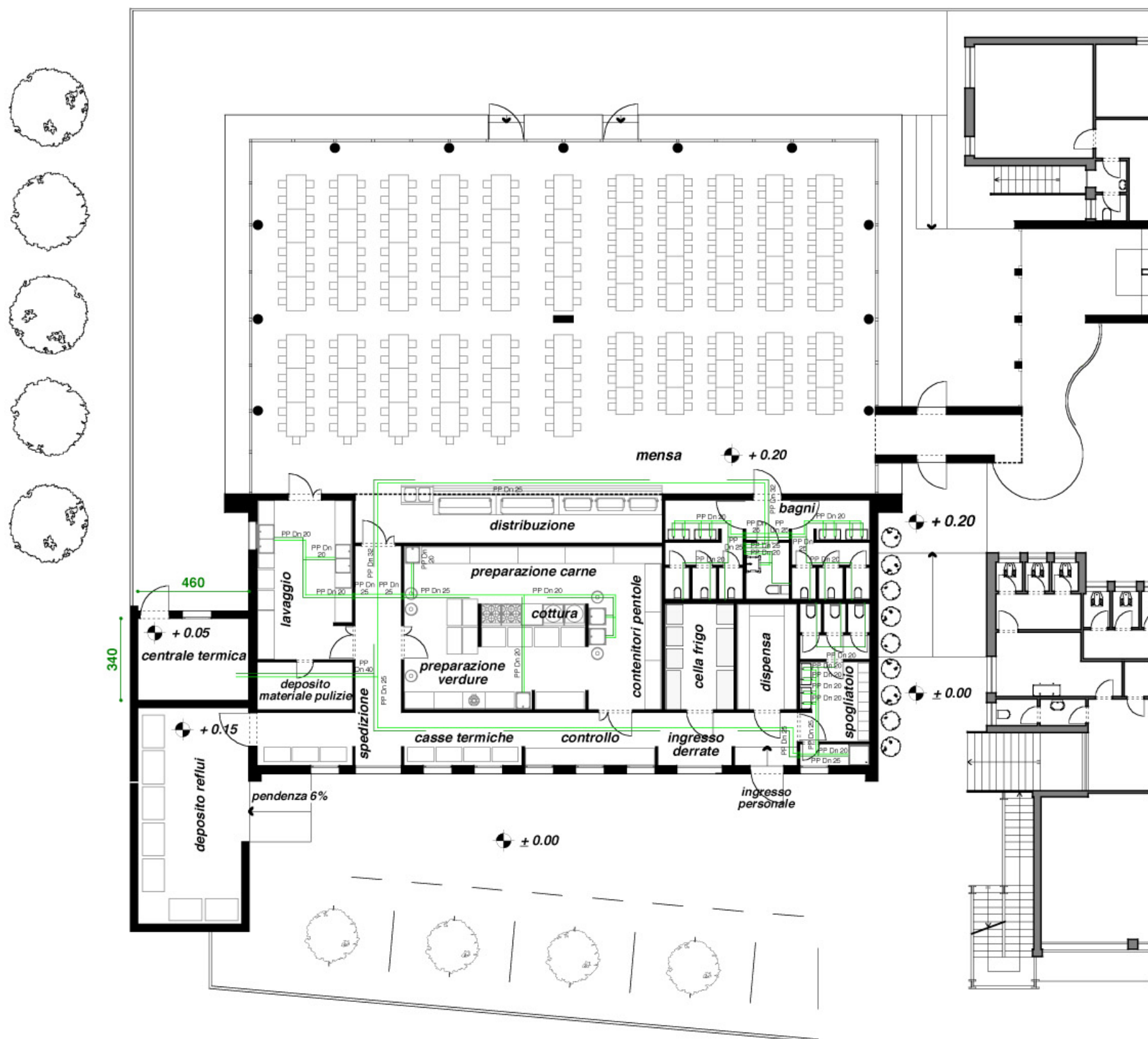


Particolare tecnico costruttivo - specifica materiali









### Legenda



Rubinetti a sfera d'arresto per esclusione adduzione idrica nei servizi Dn 25 x 3/4" o Dn 20 x 1/2"

TUBAZIONI DI DISTRIBUZIONE ACQUA SANITARIA:

materiale : POLIPROPILENE

- coibentazione per la linea Acqua Calda Sanitaria con guaina in polietilene espanso  
conduttività term. < 0.036 W/m°C ; spessore min 6 mm.

Secondo D.P.R. 412 del 26/8/93 in attuazione dell'art. 4, comma 4, della legge 9/1/91  
n° 10



